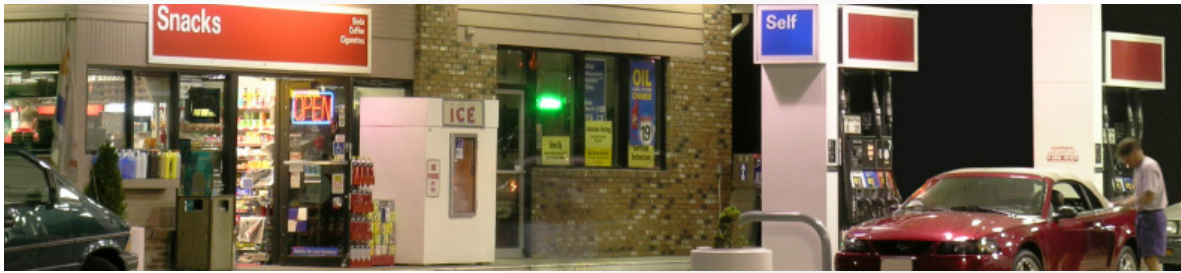


CONVENIENCE



THE SUITE

Store Management Suite (SMS) is a client-based software solution that provides regional and national retailers with seamless, integrated management of the point of sale, back office, corporate office, and all aspects of the retail enterprise. The suite contains modules that are typically outsourced, and ensures all necessary data is shared when, how, and with whom needs it. Instant connectivity, anywhere in the chain, on any connected device, is reality.

THE TECHNOLOGY

The core of SMS is built upon basic fundamentals: provide an integrated system that allows retailers to run their business from the forecourt to host without the need for additional applications. That foundation is rooted in solid, proven industry standards designed to offer the protection you require and the flexibility you demand. Our architecture ensures undeniable reliability, a robust feature set, and speed. The system can also be personalized without changing source code, so customization has never been easier, nor more stable. Now you too can have a solid enterprise wide retail management system designed around your unique needs.

THE OFFER

Interaction with customers is changing with new mobile offerings, fresh food services, integrated loyalty requirements and new equipment needs. SMS is the premier platform providing the flexibility today's retailers require to retain their current customers and capture new ones.

As retailing evolves, managing the merger of brick-and-mortar with virtual outlets becomes essential. It is now about interconnecting all those points, linking your enterprise to your employees to your processes to your customers.

Understand. Deliver. Thrive. That's modern retailing. That's SMS.

CONVENIENCE



SMS FOR CONVENIENCE STORES OFFERS

Security & Peace of Mind: Fully PCI compliant, certified with both PCI DSS & Visa PABP

Point of Sale: Process transactions quickly through an HTML based touch screen interface with pumps fully integrated into UI

Pump Management: Total fuel management including control for 32 pumps, authorization, & tank monitoring from any POS; full, self-service or any combination

Back Office Management: Full-featured item maintenance including movement analysis & ability to track profitability by category by store

Inventory Control: Reliable inventory control capable of perpetual in select sub-departments

Merchandising & Promotions Management: Unparalleled sale & promotional options offering virtually unlimited combinations & offers

Purchasing, DSD & Receiving Management: Electronically order, receive & update inventory

Loyalty: Maintain customer profiles via integrated frequent shopper with detailed analytics, plus deliver promotions during or after the transaction

Digital Signage: Create customizable point-of-purchase messaging based on transaction details

Integrated Payments: Direct interfaces with First Data™, Heartland Payment Systems™, WorldPay™, including VeriShield®, Voltage Security® or RSA

Pre-Payments: Support prepaid fuel cards with discount per gallon options

E-Commerce & Phone App Engines: Fully integrated with merchandising & loyalty

Labor Management: Integrate labor costs into reporting, with time management & scheduling

Integrated Sign & Label Printing: Print signs & labels via batch or within item maintenance, by aisle, by location, by store

Mobile POS & Inventory Management: Perfect for queue busting, inventory management, price verification or changes, in-aisle labels

Physical Security: Review transactions live or recorded from back office with full EJ search

Centralized Reports & Price Updates: Deploy tighter control measures with less interaction by centralizing reporting & pricing

Car Wash Management: Integrate with loyalty, points based promotions, & PAP

Multiple Pump Options: Support pumps from Bennett™, Gilbarco™ with cash acceptor, Kraus™, Tokheim™, Wayne™ & more

PAP Design: Fully integrated pay-at-the-pump forms & screen management, including promotions, coupons, pre-pay, loyalty, social networking & more

Unattended Site: Fully capable of integrating unattended stations via centralized payment kiosk

Food Service Integration: Run the same system in all concepts, plus cross market between concepts