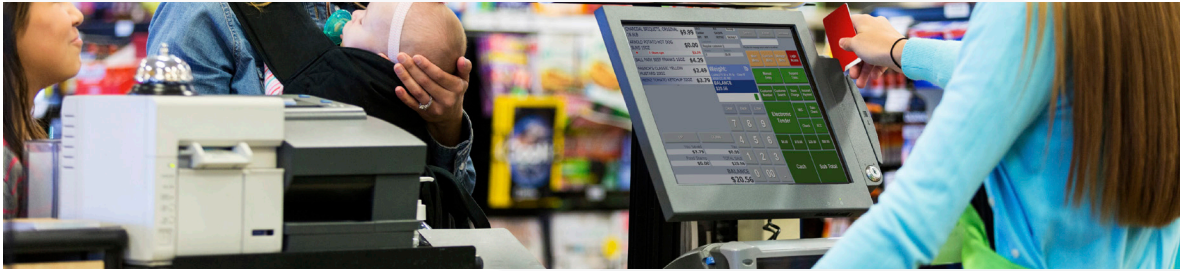


CHAIN STORE



THE SUITE

Store Management Suite (SMS) is a client-based software solution that provides regional and national retailers with seamless, integrated management of the point of sale, back office, corporate office, warehouse and all aspects of the retail enterprise. The suite contains modules that are typically outsourced, and ensures all necessary data is shared when, how, and with whom needs it. Instant connectivity, anywhere in the chain, on any connected device, is reality.

THE TECHNOLOGY

The core of SMS is built upon basic retail fundamentals: buy effectively, sell profitably, manage efficiently. That foundation is rooted in solid, proven industry standards designed to offer the protection you require and the flexibility you demand. Our architecture ensures undeniable reliability, a robust feature set, and speed. The system can also be personalized without changing source code, so customization has never been easier, nor more stable. Now you too can have a solid enterprise wide retail management system designed around your unique needs.

THE OFFER

SMS is the premier, fully connected platform that bridges all aspects of the retail enterprise, linking data, stores, and customers to decision makers. The system is flexible enough to be completely centralized, completely decentralized, or anywhere in between. Your business processes can easily be folded into the suite tools, including zone pricing and costing, taxability, promotions and item management, and a variety of customer loyalty scenarios. Similarly, all reporting and data analysis is presented by store, region, or group, including exception reporting and data validation. Every element of the system can be available at your finger tips, anytime, anywhere, on any connected device.

Understand. Deliver. Thrive. That's modern retailing. That's SMS.

CHAIN STORE



SMS FOR CHAIN ENVIRONMENTS OFFERS

Hardware Agnostic: Freedom to choose what best meets your unique needs

Security & Peace of Mind: Fully PCI compliant, certified with both PCI DSS & Visa PABP

Point of Sale: Process transactions quickly through an HTML5 based touch screen interface

Back Office Management: Full-featured item maintenance including movement analysis & profitability by category by store

Inventory Control: Controls for receiving & cost of goods management, with inter-store transfers

Merchandising & Promotions Management: Unparalleled sale & promotional options offering virtually unlimited combinations & offers

Purchasing, DSD & Receiving Management: Electronically order, receive & update inventory, all from host

Cost Management: Ensure applicable vendor rebates & allowances are applied & tracked

Loyalty: Maintain customer profiles, full loyalty programs, & deliver electronic coupons during or after the transaction, all from host

Integrated Payments & Reporting: Direct interfaces with First Data™ & Worldpay™, including VeriShield®, Voltage Security® or RSA

Accounts Receivable: Easily maintain retail plus wholesale customer account balances in real-time, plus update all stores after tender

E-Commerce & Phone App Engines: Fully integrated with merchandising chainwide

In-House Gift Cards: Manage chainwide gift cards & voucher balances, including online redemption

Labor Management: Integrate labor costs into financial reporting, & pull it any time

Integrated Sign & Label Printing: Print signs & labels via batch or within item maintenance, by aisle, by location, by store

MobilePOS & Inventory Management: Perfect for queue busting, inventory management, price verification or changes, in-aisle labels

Warehouse Management: Efficiently manage ordering & shipping processes throughout entire chain

Centralized Reports & Price Updates: Deploy tighter control measures with less interaction

Scale Integration: Manage variable weight costs & production data from host

Kiosk & Price Checker: Verify price, customer points, balance & promotions in every store

Fuel Integration: Fully integrated fuel module including pump management & cross marketing

Food Service Integration: Run the same system in all concepts, plus cross market between concepts & stores